

Application Process

Applications are available at the FACT Transit Center and can be obtained by calling our customer service at 724-628-RIDE or by visiting our web site at www.FACTbus.com.

Funding

This program is made available through Pennsylvania Department of Transportation



Program Administered By



FACT

825 Airport Road

Lemont Furnace, PA 15456

FAYETTE AREA COORDINATED TRANSPORTATION

FARES

Fares are based on one-way trips and range from \$1.50—\$6.00. Please contact the FACT Transit Center for the exact fare. All riders must bring **EXACT** fare when you ride. Sorry, our drivers cannot give change.

Phone: 724-628-RIDE

Toll Free: 1-800-321-RIDE

Fax: 724-628-7468

Email: info@factbus.com

Website:

www.FACTbus.com

TTY: 1-800-654-5984

F A C T

Transportation for People with Disabilities

"Striving Harder to Get You
Farther"



**Tel. 724-628-RIDE
(7433)**

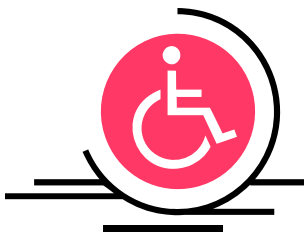
Who We Are

To better serve people with disabilities living in rural areas, Fayette County's transportation, FACT, is providing discounted shared

ride

services for eligible residents in all of Fayette County.

Everyone in Fayette County can use FACT, but only those who are eligible receive a discount.



Who is Eligible

- If you are between 18-64 years of age
- If you have any disability defined by the Americans with Disabilities Act (ADA)
- If you have proof of your disability from a physician or agency
- If you completed, in its entirety, the Registration Form for the disabled....

You are QUALIFIED!!

INFORMATION

- This is a "by reservation only," curb-to-curb service.
- Hours of service are Monday through Saturday from 7:00AM to 5:00PM and Sunday from 7:00AM to 1:00PM
- You must register 24 hours in advance. For a Monday trip, register on the Friday before.
- To avoid charge, cancellations *must* be called into the FACT office at least two (2) hours in advance of the scheduled appointment time.
- Reservations must be made at least one (1) business day in advance of the scheduled trip and before the (2) two o'clock hour.
- This is a "shared-ride" service, meaning you will be sharing the van with others traveling in the same area at the same time.
- All FACT vehicles are wheelchair-accessible.
- The call taker will give you a pick-up time and instruct you to be ready a half an hour before and a half an hour after your scheduled appointment time.

COST

- Qualified participants receive an 85% discount on all rides.
- Rates vary depending on what distance you are traveling.
- All participants must bring exact fare when you ride.



CLIENT RESPONSIBILITIES

- PwD transportation does not pay any part of the costs or penalties of waiting time or no-show fees. These costs will be the responsibility of the client.
- Any client who schedules transportation is responsible for the carrier's expense if he/she is not at the designated pick-up point at the appropriate time. No further transportation can be provided to the client under these circumstances until the carrier is appropriately reimbursed the standard no-show fee of \$8.00.
- For out-of-county trips which require the driver to wait, an \$8.00 per hour fee will be charged to the client. Furthermore, if the trip involves several clients, the waiting time will be divided among them.

Where We Go

- Anywhere within Fayette County
- Designated areas outside of Fayette County

